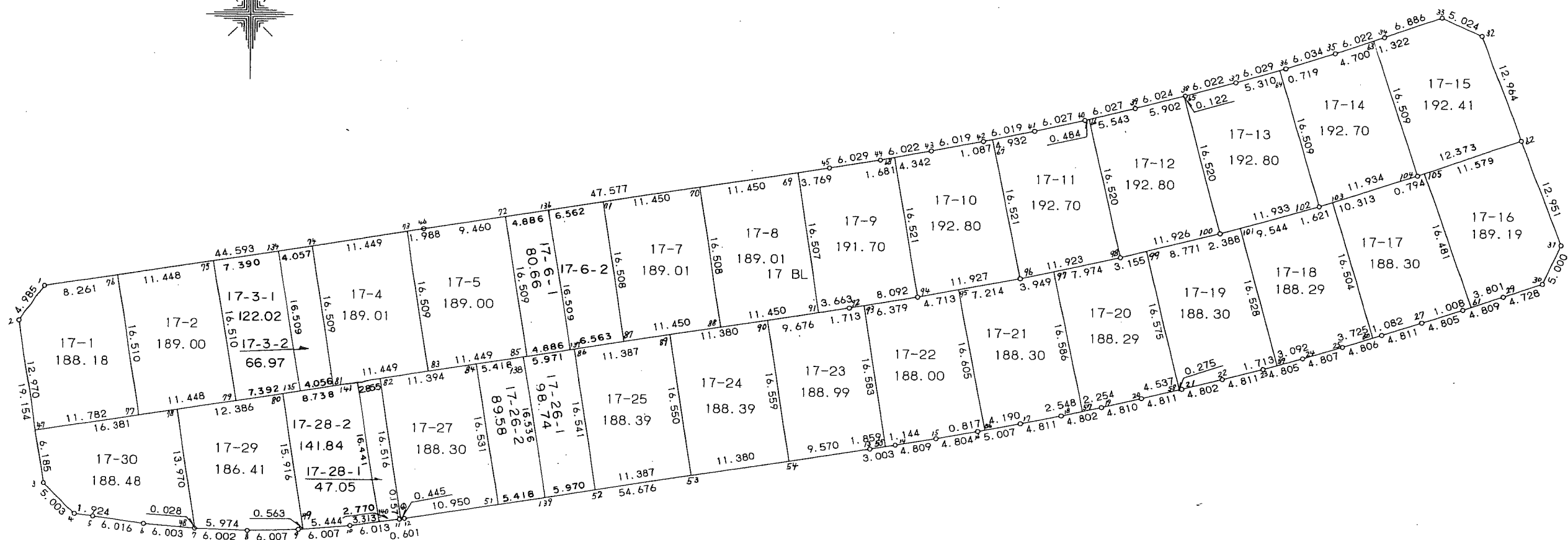
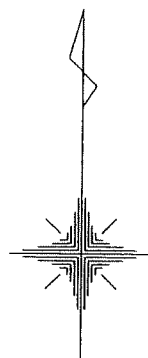


17 街区



<< 四街道南土地区画整理事業 >>

\* \* 面積計算 (倍横距法) \* \*

| 地<br>器械点 | 番 : 17 BL<br>視準点 | 内角        | 方向角       | 距離     | 緯距      | 経距     | X座標        | Y座標       | 倍横距     | 倍面積         |
|----------|------------------|-----------|-----------|--------|---------|--------|------------|-----------|---------|-------------|
| 17-1     | 17-2             | 134-44-35 | 215-43-05 | 4.985  | -4.047  | -2.910 | -39378.259 | 30201.646 | -2.910  | 11.776770   |
| 17-2     | 17-3             | 135-18-48 | 171-01-53 | 19.154 | -18.920 | 2.986  | -39397.179 | 30204.632 | -2.834  | 53.619280   |
| 17-3     | 17-4             | 144-04-55 | 135-06-48 | 5.003  | -3.545  | 3.531  | -39400.724 | 30208.163 | 3.683   | -13.056235  |
| 17-4     | 17-5             | 143-35-07 | 98-41-55  | 1.924  | -0.291  | 1.902  | -39401.015 | 30210.065 | 9.116   | -2.652756   |
| 17-5     | 17-6             | 179-01-48 | 97-43-43  | 6.016  | -0.809  | 5.961  | -39401.824 | 30216.026 | 16.979  | -13.736011  |
| 17-6     | 17-7             | 176-46-53 | 94-30-36  | 6.003  | -0.472  | 5.984  | -39402.296 | 30222.010 | 28.924  | -13.652128  |
| 17-7     | 17-8             | 177-18-15 | 91-48-51  | 6.002  | -0.190  | 5.999  | -39402.486 | 30228.009 | 40.907  | -7.772330   |
| 17-8     | 17-9             | 176-36-09 | 88-25-00  | 6.007  | 0.166   | 6.005  | -39402.320 | 30234.014 | 52.911  | 8.783226    |
| 17-9     | 17-10            | 177-07-29 | 85-32-29  | 6.007  | 0.467   | 5.989  | -39401.853 | 30240.003 | 64.905  | 30.310635   |
| 17-10    | 17-11            | 176-59-44 | 82-32-13  | 6.013  | 0.781   | 5.962  | -39401.072 | 30245.965 | 76.856  | 60.024536   |
| 17-11    | 17-12            | 179-14-19 | 81-46-32  | 0.601  | 0.086   | 0.595  | -39400.986 | 30246.560 | 83.413  | 7.173518    |
| 17-12    | 17-13            | 179-14-45 | 81-01-17  | 54.676 | 8.533   | 54.006 | -39392.453 | 30300.566 | 138.014 | 1177.673462 |
| 17-13    | 17-14            | 180-05-25 | 81-06-42  | 3.003  | 0.464   | 2.967  | -39391.989 | 30303.533 | 194.987 | 90.473968   |
| 17-14    | 17-15            | 179-23-06 | 80-29-48  | 4.809  | 0.794   | 4.743  | -39391.195 | 30308.276 | 202.697 | 160.941418  |
| 17-15    | 17-16            | 179-10-42 | 79-40-30  | 4.804  | 0.861   | 4.726  | -39390.334 | 30313.002 | 212.166 | 182.674926  |
| 17-16    | 17-17            | 179-18-24 | 78-58-54  | 5.007  | 0.957   | 4.915  | -39389.377 | 30317.917 | 221.807 | 212.269299  |
| 17-17    | 17-18            | 179-29-45 | 78-28-39  | 4.811  | 0.961   | 4.714  | -39388.416 | 30322.631 | 231.436 | 222.409996  |
| 17-18    | 17-19            | 179-17-01 | 77-45-40  | 4.802  | 1.018   | 4.693  | -39387.398 | 30327.324 | 240.843 | 245.178174  |
| 17-19    | 17-20            | 179-17-20 | 77-03-00  | 4.810  | 1.078   | 4.688  | -39386.320 | 30332.012 | 250.224 | 269.741472  |
| 17-20    | 17-21            | 179-34-31 | 76-37-31  | 4.811  | 1.113   | 4.681  | -39385.207 | 30336.693 | 259.593 | 288.927009  |
| 17-21    | 17-22            | 179-07-28 | 75-44-59  | 4.802  | 1.182   | 4.654  | -39384.025 | 30341.347 | 268.928 | 317.872896  |
| 17-22    | 17-23            | 179-16-42 | 75-01-41  | 4.811  | 1.243   | 4.648  | -39382.782 | 30345.995 | 278.230 | 345.839890  |
| 17-23    | 17-24            | 179-30-35 | 74-32-16  | 4.805  | 1.281   | 4.631  | -39381.501 | 30350.626 | 287.509 | 368.299029  |
| 17-24    | 17-25            | 179-12-50 | 73-45-06  | 4.807  | 1.345   | 4.615  | -39380.156 | 30355.241 | 296.755 | 399.135475  |
| 17-25    | 17-26            | 179-21-47 | 73-06-53  | 4.806  | 1.396   | 4.599  | -39378.760 | 30359.840 | 305.969 | 427.132724  |

<< 四街道南土地区画整理事業 >>

| 器械点   | 視準点   | 内角        | 方向角       | 距離     | 緯距     | 経距      | X座標        | Y座標       | 倍横距     | 倍面積          |
|-------|-------|-----------|-----------|--------|--------|---------|------------|-----------|---------|--------------|
| 17-26 | 17-27 | 179-30-18 | 72-37-11  | 4.811  | 1.437  | 4.591   | -39377.323 | 30364.431 | 315.159 | 452.883483   |
| 17-27 | 17-28 | 179-08-29 | 71-45-40  | 4.805  | 1.504  | 4.564   | -39375.819 | 30368.995 | 324.314 | 487.768256   |
| 17-28 | 17-29 | 179-23-09 | 71-08-49  | 4.809  | 1.554  | 4.551   | -39374.265 | 30373.546 | 333.429 | 518.148666   |
| 17-29 | 17-30 | 179-32-53 | 70-41-42  | 4.728  | 1.563  | 4.462   | -39372.702 | 30378.008 | 342.442 | 535.236846   |
| 17-30 | 17-31 | 134-05-12 | 24-46-54  | 5.000  | 4.540  | 2.096   | -39368.162 | 30380.104 | 349.000 | 1584.460000  |
| 17-31 | 17-62 | 134-24-16 | 339-11-10 | 12.951 | 12.106 | -4.602  | -39356.056 | 30375.502 | 346.494 | 4194.656364  |
| 17-62 | 17-32 | 180-18-01 | 339-29-11 | 12.964 | 12.142 | -4.543  | -39343.914 | 30370.959 | 337.349 | 4096.091558  |
| 17-32 | 17-33 | 135-18-31 | 294-47-42 | 5.024  | 2.107  | -4.561  | -39341.807 | 30366.398 | 328.245 | 691.612215   |
| 17-33 | 17-34 | 135-50-00 | 250-37-42 | 6.886  | -2.284 | -6.496  | -39344.091 | 30359.902 | 317.188 | -724.457392  |
| 17-34 | 17-35 | 181-12-05 | 251-49-47 | 6.022  | -1.878 | -5.722  | -39345.969 | 30354.180 | 304.970 | -572.733660  |
| 17-35 | 17-36 | 180-57-49 | 252-47-36 | 6.034  | -1.785 | -5.764  | -39347.754 | 30348.416 | 293.484 | -523.868940  |
| 17-36 | 17-37 | 180-52-11 | 253-39-47 | 6.029  | -1.696 | -5.786  | -39349.450 | 30342.630 | 281.934 | -478.160064  |
| 17-37 | 17-38 | 180-55-06 | 254-34-53 | 6.022  | -1.601 | -5.805  | -39351.051 | 30336.825 | 270.343 | -432.819143  |
| 17-38 | 17-39 | 180-57-04 | 255-31-57 | 6.024  | -1.505 | -5.833  | -39352.556 | 30330.992 | 258.705 | -389.351025  |
| 17-39 | 17-40 | 180-46-21 | 256-18-18 | 6.027  | -1.427 | -5.856  | -39353.983 | 30325.136 | 247.016 | -352.491832  |
| 17-40 | 17-41 | 180-55-04 | 257-13-22 | 6.027  | -1.333 | -5.878  | -39355.316 | 30319.258 | 235.282 | -313.630906  |
| 17-41 | 17-42 | 180-50-58 | 258-04-20 | 6.019  | -1.244 | -5.889  | -39356.560 | 30313.369 | 223.515 | -278.052660  |
| 17-42 | 17-43 | 181-00-02 | 259-04-22 | 6.019  | -1.141 | -5.910  | -39357.701 | 30307.459 | 211.716 | -241.567956  |
| 17-43 | 17-44 | 180-33-28 | 259-37-50 | 6.022  | -1.084 | -5.924  | -39358.785 | 30301.535 | 199.882 | -216.672088  |
| 17-44 | 17-45 | 181-06-03 | 260-43-53 | 6.029  | -0.971 | -5.950  | -39359.756 | 30295.585 | 188.008 | -182.555768  |
| 17-45 | 17-46 | 180-14-46 | 260-58-39 | 47.577 | -7.461 | -46.988 | -39367.217 | 30248.597 | 135.070 | -1007.757270 |
| 17-46 | 17-1  | 179-59-51 | 260-58-30 | 44.593 | -6.995 | -44.041 | -39374.212 | 30204.556 | 44.041  | -308.066795  |
|       |       |           |           |        |        |         |            |           | 倍面積     | 11368.060132 |
|       |       |           |           |        |        |         |            |           | 面積      | 5684.03      |

<< 四街道南土地区画整理事業 >>

| 地番     | 種別  | 面積          | 坪数    |
|--------|-----|-------------|-------|
| 17-1   | 境界点 | 188.1800000 | 56.92 |
| 17-2   | 境界点 | 189.0000000 | 57.17 |
| 17-3-1 | 境界点 | 122.0200000 | 36.91 |
| 17-3-2 | 境界点 | 66.9700000  | 20.25 |
| 17-4   | 境界点 | 189.0100000 | 57.17 |
| 17-5   | 境界点 | 189.0000000 | 57.17 |
| 17-6-1 | 境界点 | 80.6600000  | 24.39 |
| 17-6-2 | 境界点 | 108.3400000 | 32.77 |
| 17-7   | 境界点 | 189.0100000 | 57.17 |
| 17-8   | 境界点 | 189.0100000 | 57.17 |
| 17-9   | 境界点 | 191.7000000 | 57.98 |
| 17-10  | 境界点 | 192.8000000 | 58.32 |
| 17-11  | 境界点 | 192.7000000 | 58.29 |
| 17-12  | 境界点 | 192.8000000 | 58.32 |
| 17-13  | 境界点 | 192.8000000 | 58.32 |
| 17-14  | 境界点 | 192.7000000 | 58.29 |
| 17-15  | 境界点 | 192.4100000 | 58.20 |
| 17-16  | 境界点 | 189.1900000 | 57.22 |
| 17-17  | 境界点 | 188.3000000 | 56.96 |
| 17-18  | 境界点 | 188.2900000 | 56.95 |
| 17-19  | 境界点 | 188.3000000 | 56.96 |
| 17-20  | 境界点 | 188.2900000 | 56.95 |
| 17-21  | 境界点 | 188.3000000 | 56.96 |
| 17-22  | 境界点 | 188.0000000 | 56.87 |
| 17-23  | 境界点 | 188.9900000 | 57.16 |
| 17-24  | 境界点 | 188.3900000 | 56.98 |

<< 四街道南土地区画整理事業 >>

| 地番      | 種別  | 面積           | 坪数      |
|---------|-----|--------------|---------|
| 17-25   | 境界点 | 188.3900000  | 56.98   |
| 17-26-1 | 境界点 | 98.7400000   | 29.86   |
| 17-26-2 | 境界点 | 89.5800000   | 27.09   |
| 17-27   | 境界点 | 188.3000000  | 56.96   |
| 17-28-1 | 境界点 | 47.0500000   | 14.23   |
| 17-28-2 | 境界点 | 141.8400000  | 42.90   |
| 17-29   | 境界点 | 186.4100000  | 56.38   |
| 17-30   | 境界点 | 188.4800000  | 57.01   |
|         | 合計  | 5683.9500000 | 1719.39 |

<< 四街道南土地区画整理事業 >>

\* \* 面積計算 ( 倍横距法 ) \* \*

| 地<br>器械点 | 番 : 17-1<br>視準点 | 内角        | 方向角       | 距離     | 緯距      | 経距     | X座標        | Y座標       | 倍横距     | 倍面積        |
|----------|-----------------|-----------|-----------|--------|---------|--------|------------|-----------|---------|------------|
| 17-76    | 17-1            | 89-59-47  | 260-58-28 | 8.261  | -1.296  | -8.159 | -39374.212 | 30204.556 | -8.159  | 10.574064  |
| 17-1     | 17-2            | 134-44-37 | 215-43-05 | 4.985  | -4.047  | -2.910 | -39378.259 | 30201.646 | -19.228 | 77.815716  |
| 17-2     | 17-47           | 135-18-46 | 171-01-51 | 12.970 | -12.811 | 2.022  | -39391.070 | 30203.668 | -20.116 | 257.706076 |
| 17-47    | 17-77           | 89-56-42  | 80-58-33  | 11.782 | 1.848   | 11.636 | -39389.222 | 30215.304 | -6.458  | -11.934384 |
| 17-77    | 17-76           | 90-00-08  | 350-58-41 | 16.510 | 16.306  | -2.589 | -39372.916 | 30212.715 | 2.589   | 42.216234  |
|          |                 |           |           |        |         |        |            |           | 倍面積     | 376.377706 |
|          |                 |           |           |        |         |        |            |           | 面積      | 188.18     |

\* \* 面積計算 ( 倍横距法 ) \* \*

| 地<br>器械点 | 番 : 17-2<br>視準点 | 内角       | 方向角       | 距離     | 緯距      | 経距      | X座標        | Y座標       | 倍横距    | 倍面積        |
|----------|-----------------|----------|-----------|--------|---------|---------|------------|-----------|--------|------------|
| 17-77    | 17-79           | 89-59-45 | 80-58-26  | 11.448 | 1.796   | 11.306  | -39387.426 | 30226.610 | 11.306 | 20.305576  |
| 17-79    | 17-75           | 90-00-15 | 350-58-41 | 16.510 | 16.306  | -2.589  | -39371.120 | 30224.021 | 20.023 | 326.495038 |
| 17-75    | 17-76           | 89-59-45 | 260-58-26 | 11.448 | -1.796  | -11.306 | -39372.916 | 30212.715 | 6.128  | -11.005888 |
| 17-76    | 17-77           | 90-00-15 | 170-58-41 | 16.510 | -16.306 | 2.589   | -39389.222 | 30215.304 | -2.589 | 42.216234  |
|          |                 |          |           |        |         |         |            |           | 倍面積    | 378.010960 |
|          |                 |          |           |        |         |         |            |           | 面積     | 189.00     |

<< 四街道南土地区画整理事業 >>

\* \* 面積計算 (倍横距法) \* \*

| 地<br>器械点 | 番 : 17-3-1<br>視準点 | 内角       | 方向角       | 距離     | 緯距      | 経距     | X座標        | Y座標       | 倍横距     | 倍面積        |
|----------|-------------------|----------|-----------|--------|---------|--------|------------|-----------|---------|------------|
| 17-134   | 17-75             | 90-00-12 | 260-58-39 | 7.390  | -1.159  | -7.299 | -39371.120 | 30224.021 | -7.299  | 8.459541   |
| 17-75    | 17-79             | 90-00-02 | 170-58-41 | 16.510 | -16.306 | 2.589  | -39387.426 | 30226.610 | -12.009 | 195.818754 |
| 17-79    | 17-135            | 89-59-34 | 80-58-15  | 7.392  | 1.160   | 7.300  | -39386.266 | 30233.910 | -2.120  | -2.459200  |
| 17-135   | 17-134            | 90-00-12 | 350-58-27 | 16.509 | 16.305  | -2.590 | -39369.961 | 30231.320 | 2.590   | 42.229950  |
|          |                   |          |           |        |         |        |            |           | 倍面積     | 244.049045 |
|          |                   |          |           |        |         |        |            |           | 面積      | 122.02     |

\* \* 面積計算 (倍横距法) \* \*

| 地<br>器械点 | 番 : 17-3-2<br>視準点 | 内角       | 方向角       | 距離     | 緯距      | 経距     | X座標        | Y座標       | 倍横距    | 倍面積        |
|----------|-------------------|----------|-----------|--------|---------|--------|------------|-----------|--------|------------|
| 17-135   | 17-81             | 90-00-17 | 80-58-44  | 4.056  | 0.636   | 4.006  | -39385.630 | 30237.916 | 4.006  | 2.547816   |
| 17-81    | 17-74             | 89-59-55 | 350-58-39 | 16.509 | 16.305  | -2.589 | -39369.325 | 30235.327 | 5.423  | 88.422015  |
| 17-74    | 17-134            | 90-00-13 | 260-58-52 | 4.057  | -0.636  | -4.007 | -39369.961 | 30231.320 | -1.173 | 0.746028   |
| 17-134   | 17-135            | 89-59-35 | 170-58-27 | 16.509 | -16.305 | 2.590  | -39386.266 | 30233.910 | -2.590 | 42.229950  |
|          |                   |          |           |        |         |        |            |           | 倍面積    | 133.945809 |
|          |                   |          |           |        |         |        |            |           | 面積     | 66.97      |

<< 四街道南土地区画整理事業 >>

\* \* 面積計算 ( 倍横距法 ) \* \*

| 地<br>器械点 | 番 : 17-4<br>視準点 | 内角       | 方向角       | 距離     | 緯距      | 経距      | X座標        | Y座標       | 倍横距     | 倍面積        |
|----------|-----------------|----------|-----------|--------|---------|---------|------------|-----------|---------|------------|
| 17-73    | 17-74           | 89-59-49 | 260-58-28 | 11.449 | -1.796  | -11.307 | -39369.325 | 30235.327 | -11.307 | 20.307372  |
| 17-74    | 17-81           | 90-00-11 | 170-58-39 | 16.509 | -16.305 | 2.589   | -39385.630 | 30237.916 | -20.025 | 326.507625 |
| 17-81    | 17-83           | 89-59-49 | 80-58-28  | 11.449 | 1.796   | 11.307  | -39383.834 | 30249.223 | -6.129  | -11.007684 |
| 17-83    | 17-73           | 90-00-11 | 350-58-39 | 16.509 | 16.305  | -2.589  | -39367.529 | 30246.634 | 2.589   | 42.213645  |
|          |                 |          |           |        |         |         |            |           | 倍面積     | 378.020958 |
|          |                 |          |           |        |         |         |            |           | 面積      | 189.01     |

\* \* 面積計算 ( 倍横距法 ) \* \*

| 地<br>器械点 | 番 : 17-5<br>視準点 | 内角        | 方向角       | 距離     | 緯距      | 経距     | X座標        | Y座標       | 倍横距    | 倍面積        |
|----------|-----------------|-----------|-----------|--------|---------|--------|------------|-----------|--------|------------|
| 17-83    | 17-85           | 89-59-49  | 80-58-28  | 11.449 | 1.796   | 11.307 | -39382.038 | 30260.530 | 11.307 | 20.307372  |
| 17-85    | 17-72           | 89-59-59  | 350-58-27 | 16.509 | 16.305  | -2.590 | -39365.733 | 30257.940 | 20.024 | 326.491320 |
| 17-72    | 17-46           | 90-00-02  | 260-58-29 | 9.460  | -1.484  | -9.343 | -39367.217 | 30248.597 | 8.091  | -12.007044 |
| 17-46    | 17-73           | 179-59-39 | 260-58-08 | 1.988  | -0.312  | -1.963 | -39367.529 | 30246.634 | -3.215 | 1.003080   |
| 17-73    | 17-83           | 90-00-31  | 170-58-39 | 16.509 | -16.305 | 2.589  | -39383.834 | 30249.223 | -2.589 | 42.213645  |
|          |                 |           |           |        |         |        |            |           | 倍面積    | 378.008373 |
|          |                 |           |           |        |         |        |            |           | 面積     | 189.00     |



<< 四街道南土地区画整理事業 >>

\* \* 面積計算 (倍横距法) \* \*

| 地<br>器械点 | 番 : 17-6-1<br>視準点 | 内角       | 方向角       | 距離     | 緯距      | 経距     | X座標        | Y座標       | 倍横距    | 倍面積        |
|----------|-------------------|----------|-----------|--------|---------|--------|------------|-----------|--------|------------|
| 17-136   | 17-72             | 90-00-13 | 260-58-52 | 4.886  | -0.766  | -4.826 | -39365.733 | 30257.940 | -4.826 | 3.696716   |
| 17-72    | 17-85             | 89-59-35 | 170-58-27 | 16.509 | -16.305 | 2.590  | -39382.038 | 30260.530 | -7.062 | 115.145910 |
| 17-85    | 17-137            | 90-00-18 | 80-58-45  | 4.885  | 0.766   | 4.825  | -39381.272 | 30265.355 | 0.353  | 0.270398   |
| 17-137   | 17-136            | 89-59-54 | 350-58-39 | 16.509 | 16.305  | -2.589 | -39364.967 | 30262.766 | 2.589  | 42.213645  |
|          |                   |          |           |        |         |        |            |           | 倍面積    | 161.326669 |
|          |                   |          |           |        |         |        |            |           | 面積     | 80.66      |

\* \* 面積計算 (倍横距法) \* \*

| 地<br>器械点 | 番 : 17-6-2<br>視準点 | 内角       | 方向角       | 距離     | 緯距      | 経距     | X座標        | Y座標       | 倍横距    | 倍面積        |
|----------|-------------------|----------|-----------|--------|---------|--------|------------|-----------|--------|------------|
| 17-137   | 17-87             | 89-59-37 | 80-58-16  | 6.563  | 1.030   | 6.482  | -39380.242 | 30271.837 | 6.482  | 6.676460   |
| 17-87    | 17-71             | 90-00-09 | 350-58-25 | 16.508 | 16.304  | -2.590 | -39363.938 | 30269.247 | 10.374 | 169.137696 |
| 17-71    | 17-136            | 90-00-17 | 260-58-42 | 6.562  | -1.029  | -6.481 | -39364.967 | 30262.766 | 1.303  | -1.340787  |
| 17-136   | 17-137            | 89-59-57 | 170-58-39 | 16.509 | -16.305 | 2.589  | -39381.272 | 30265.355 | -2.589 | 42.213645  |
|          |                   |          |           |        |         |        |            |           | 倍面積    | 216.687014 |
|          |                   |          |           |        |         |        |            |           | 面積     | 108.34     |

<< 四街道南土地区画整理事業 >>

\* \* 面積計算 (倍横距法) \* \*

| 地<br>器械点 | 番 : 17-7<br>視準点 | 内角       | 方向角       | 距離     | 緯距      | 経距      | X座標        | Y座標       | 倍横距    | 倍面積        |
|----------|-----------------|----------|-----------|--------|---------|---------|------------|-----------|--------|------------|
| 17-87    | 17-89           | 90-00-06 | 80-58-31  | 11.450 | 1.796   | 11.308  | -39378.446 | 30283.145 | 11.308 | 20.309168  |
| 17-89    | 17-70           | 89-59-54 | 350-58-25 | 16.508 | 16.304  | -2.590  | -39362.142 | 30280.555 | 20.026 | 326.503904 |
| 17-70    | 17-71           | 90-00-06 | 260-58-31 | 11.450 | -1.796  | -11.308 | -39363.938 | 30269.247 | 6.128  | -11.005888 |
| 17-71    | 17-87           | 89-59-54 | 170-58-25 | 16.508 | -16.304 | 2.590   | -39380.242 | 30271.837 | -2.590 | 42.227360  |
|          |                 |          |           |        |         |         |            |           | 倍面積    | 378.034544 |
|          |                 |          |           |        |         |         |            |           | 面積     | 189.01     |

\* \* 面積計算 (倍横距法) \* \*

| 地<br>器械点 | 番 : 17-8<br>視準点 | 内角       | 方向角       | 距離     | 緯距      | 経距      | X座標        | Y座標       | 倍横距    | 倍面積        |
|----------|-----------------|----------|-----------|--------|---------|---------|------------|-----------|--------|------------|
| 17-89    | 17-91           | 90-00-06 | 80-58-31  | 11.450 | 1.796   | 11.308  | -39376.650 | 30294.453 | 11.308 | 20.309168  |
| 17-91    | 17-69           | 89-59-52 | 350-58-23 | 16.507 | 16.303  | -2.590  | -39360.347 | 30291.863 | 20.026 | 326.483878 |
| 17-69    | 17-70           | 90-00-26 | 260-58-49 | 11.450 | -1.795  | -11.308 | -39362.142 | 30280.555 | 6.128  | -10.999760 |
| 17-70    | 17-89           | 89-59-36 | 170-58-25 | 16.508 | -16.304 | 2.590   | -39378.446 | 30283.145 | -2.590 | 42.227360  |
|          |                 |          |           |        |         |         |            |           | 倍面積    | 378.020646 |
|          |                 |          |           |        |         |         |            |           | 面積     | 189.01     |

<< 四街道南土地区画整理事業 >>

\* \* 面積計算 (倍横距法) \* \*

| 地<br>器械点 | 番 : 17-9<br>視準点 | 内角        | 方向角       | 距離     | 緯距      | 経距     | X座標        | Y座標       | 倍横距    | 倍面積        |
|----------|-----------------|-----------|-----------|--------|---------|--------|------------|-----------|--------|------------|
| 17-91    | 17-92           | 89-59-48  | 80-58-11  | 3.663  | 0.575   | 3.618  | -39376.075 | 30298.071 | 3.618  | 2.080350   |
| 17-92    | 17-94           | 179-37-38 | 80-35-49  | 8.092  | 1.322   | 7.983  | -39374.753 | 30306.054 | 15.219 | 20.119518  |
| 17-94    | 17-68           | 89-24-48  | 350-00-37 | 16.521 | 16.271  | -2.866 | -39358.482 | 30303.188 | 20.336 | 330.887056 |
| 17-68    | 17-44           | 89-36-09  | 259-36-46 | 1.681  | -0.303  | -1.653 | -39358.785 | 30301.535 | 15.817 | -4.792551  |
| 17-44    | 17-45           | 181-07-07 | 260-43-53 | 6.029  | -0.971  | -5.950 | -39359.756 | 30295.585 | 8.214  | -7.975794  |
| 17-45    | 17-69           | 180-14-46 | 260-58-39 | 3.769  | -0.591  | -3.722 | -39360.347 | 30291.863 | -1.458 | 0.861678   |
| 17-69    | 17-91           | 89-59-44  | 170-58-23 | 16.507 | -16.303 | 2.590  | -39376.650 | 30294.453 | -2.590 | 42.224770  |
|          |                 |           |           |        |         |        |            |           | 倍面積    | 383.405027 |
|          |                 |           |           |        |         |        |            |           | 面積     | 191.70     |

\* \* 面積計算 (倍横距法) \* \*

| 地<br>器械点 | 番 : 17-10<br>視準点 | 内角        | 方向角       | 距離     | 緯距      | 経距     | X座標        | Y座標       | 倍横距    | 倍面積        |
|----------|------------------|-----------|-----------|--------|---------|--------|------------|-----------|--------|------------|
| 17-94    | 17-96            | 89-10-28  | 79-11-05  | 11.927 | 2.238   | 11.715 | -39372.515 | 30317.769 | 11.715 | 26.218170  |
| 17-96    | 17-67            | 89-09-43  | 348-20-48 | 16.521 | 16.180  | -3.337 | -39356.335 | 30314.432 | 20.093 | 325.104740 |
| 17-67    | 17-42            | 89-42-08  | 258-02-56 | 1.087  | -0.225  | -1.063 | -39356.560 | 30313.369 | 15.693 | -3.530925  |
| 17-42    | 17-43            | 181-01-26 | 259-04-22 | 6.019  | -1.141  | -5.910 | -39357.701 | 30307.459 | 8.720  | -9.949520  |
| 17-43    | 17-68            | 180-33-52 | 259-38-14 | 4.342  | -0.781  | -4.271 | -39358.482 | 30303.188 | -1.461 | 1.141041   |
| 17-68    | 17-94            | 90-22-23  | 170-00-37 | 16.521 | -16.271 | 2.866  | -39374.753 | 30306.054 | -2.866 | 46.632686  |
|          |                  |           |           |        |         |        |            |           | 倍面積    | 385.616192 |
|          |                  |           |           |        |         |        |            |           | 面積     | 192.80     |

<< 四街道南土地区画整理事業 >>

\* \* 面積計算 (倍横距法) \* \*

| 地<br>器械点 | 番 : 17-11<br>視準点 | 内角        | 方向角       | 距離     | 緯距      | 経距     | X座標        | Y座標       | 倍横距    | 倍面積        |
|----------|------------------|-----------|-----------|--------|---------|--------|------------|-----------|--------|------------|
| 17-96    | 17-98            | 89-12-04  | 77-32-52  | 11.923 | 2.571   | 11.643 | -39369.944 | 30329.412 | 11.643 | 29.934153  |
| 17-98    | 17-66            | 89-07-58  | 346-40-50 | 16.520 | 16.076  | -3.806 | -39353.868 | 30325.606 | 19.480 | 313.160480 |
| 17-66    | 17-40            | 89-34-13  | 256-15-03 | 0.484  | -0.115  | -0.470 | -39353.983 | 30325.136 | 15.204 | -1.748460  |
| 17-40    | 17-41            | 180-58-19 | 257-13-22 | 6.027  | -1.333  | -5.878 | -39355.316 | 30319.258 | 8.856  | -11.805048 |
| 17-41    | 17-67            | 180-51-16 | 258-04-38 | 4.932  | -1.019  | -4.826 | -39356.335 | 30314.432 | -1.848 | 1.883112   |
| 17-67    | 17-96            | 90-16-10  | 168-20-48 | 16.521 | -16.180 | 3.337  | -39372.515 | 30317.769 | -3.337 | 53.992660  |
|          |                  |           |           |        |         |        |            |           | 倍面積    | 385.416897 |
|          |                  |           |           |        |         |        |            |           | 面積     | 192.70     |

\* \* 面積計算 (倍横距法) \* \*

| 地<br>器械点 | 番 : 17-12<br>視準点 | 内角        | 方向角       | 距離     | 緯距      | 経距     | X座標        | Y座標       | 倍横距    | 倍面積        |
|----------|------------------|-----------|-----------|--------|---------|--------|------------|-----------|--------|------------|
| 17-98    | 17-100           | 89-13-17  | 75-54-07  | 11.926 | 2.905   | 11.567 | -39367.039 | 30340.979 | 11.567 | 33.602135  |
| 17-100   | 17-65            | 89-06-40  | 345-00-47 | 16.520 | 15.958  | -4.272 | -39351.081 | 30336.707 | 18.862 | 300.999796 |
| 17-65    | 17-39            | 90-30-54  | 255-31-41 | 5.902  | -1.475  | -5.715 | -39352.556 | 30330.992 | 8.875  | -13.090625 |
| 17-39    | 17-66            | 180-46-54 | 256-18-35 | 5.543  | -1.312  | -5.386 | -39353.868 | 30325.606 | -2.226 | 2.920512   |
| 17-66    | 17-98            | 90-22-15  | 166-40-50 | 16.520 | -16.076 | 3.806  | -39369.944 | 30329.412 | -3.806 | 61.185256  |
|          |                  |           |           |        |         |        |            |           | 倍面積    | 385.617074 |
|          |                  |           |           |        |         |        |            |           | 面積     | 192.80     |

<< 四街道南土地区画整理事業 >>

\* \* 面積計算 ( 倍横距法 ) \* \*

| 地<br>器械点 | 番 : 17-13<br>視準点 | 内角        | 方向角       | 距離     | 緯距      | 経距     | X座標        | Y座標       | 倍横距    | 倍面積        |
|----------|------------------|-----------|-----------|--------|---------|--------|------------|-----------|--------|------------|
| 17-100   | 17-102           | 89-06-08  | 74-06-55  | 11.933 | 3.266   | 11.477 | -39363.773 | 30352.456 | 11.477 | 37.483882  |
| 17-102   | 17-64            | 89-14-08  | 343-21-03 | 16.509 | 15.817  | -4.730 | -39347.956 | 30347.726 | 18.224 | 288.249008 |
| 17-64    | 17-37            | 90-18-34  | 253-39-37 | 5.310  | -1.494  | -5.096 | -39349.450 | 30342.630 | 8.398  | -12.546612 |
| 17-37    | 17-38            | 180-55-16 | 254-34-53 | 6.022  | -1.601  | -5.805 | -39351.051 | 30336.825 | -2.503 | 4.007303   |
| 17-38    | 17-65            | 181-09-15 | 255-44-08 | 0.122  | -0.030  | -0.118 | -39351.081 | 30336.707 | -8.426 | 0.252780   |
| 17-65    | 17-100           | 89-16-39  | 165-00-47 | 16.520 | -15.958 | 4.272  | -39367.039 | 30340.979 | -4.272 | 68.172576  |
|          |                  |           |           |        |         |        |            |           | 倍面積    | 385.618937 |
|          |                  |           |           |        |         |        |            |           | 面積     | 192.80     |

\* \* 面積計算 ( 倍横距法 ) \* \*

| 地<br>器械点 | 番 : 17-14<br>視準点 | 内角        | 方向角       | 距離     | 緯距      | 経距     | X座標        | Y座標       | 倍横距    | 倍面積        |
|----------|------------------|-----------|-----------|--------|---------|--------|------------|-----------|--------|------------|
| 17-102   | 17-104           | 89-06-09  | 72-27-12  | 11.934 | 3.598   | 11.379 | -39360.175 | 30363.835 | 11.379 | 40.941642  |
| 17-104   | 17-63            | 89-13-37  | 341-40-49 | 16.509 | 15.672  | -5.189 | -39344.503 | 30358.646 | 17.569 | 275.341368 |
| 17-63    | 17-35            | 90-08-49  | 251-49-38 | 4.700  | -1.466  | -4.466 | -39345.969 | 30354.180 | 7.914  | -11.601924 |
| 17-35    | 17-36            | 180-57-58 | 252-47-36 | 6.034  | -1.785  | -5.764 | -39347.754 | 30348.416 | -2.316 | 4.134060   |
| 17-36    | 17-64            | 180-53-21 | 253-40-57 | 0.719  | -0.202  | -0.690 | -39347.956 | 30347.726 | -8.770 | 1.771540   |
| 17-64    | 17-102           | 89-40-06  | 163-21-03 | 16.509 | -15.817 | 4.730  | -39363.773 | 30352.456 | -4.730 | 74.814410  |
|          |                  |           |           |        |         |        |            |           | 倍面積    | 385.401096 |
|          |                  |           |           |        |         |        |            |           | 面積     | 192.70     |

<< 四街道南土地区画整理事業 >>

\* \* 面積計算 (倍横距法) \* \*

| 地<br>器械点 | 番 : 17-15<br>視準点 | 内角        | 方向角       | 距離     | 緯距      | 經距     | X座標        | Y座標       | 倍横距    | 倍面積        |
|----------|------------------|-----------|-----------|--------|---------|--------|------------|-----------|--------|------------|
| 17-104   | 17-62            | 88-52-27  | 70-33-16  | 12.373 | 4.119   | 11.667 | -39356.056 | 30375.502 | 11.667 | 48.056373  |
| 17-62    | 17-32            | 88-55-55  | 339-29-11 | 12.964 | 12.142  | -4.543 | -39343.914 | 30370.959 | 18.791 | 228.160322 |
| 17-32    | 17-33            | 135-18-31 | 294-47-42 | 5.024  | 2.107   | -4.561 | -39341.807 | 30366.398 | 9.687  | 20.410509  |
| 17-33    | 17-34            | 135-50-00 | 250-37-42 | 6.886  | -2.284  | -6.496 | -39344.091 | 30359.902 | -1.370 | 3.129080   |
| 17-34    | 17-63            | 181-12-39 | 251-50-21 | 1.322  | -0.412  | -1.256 | -39344.503 | 30358.646 | -9.122 | 3.758264   |
| 17-63    | 17-104           | 89-50-28  | 161-40-49 | 16.509 | -15.672 | 5.189  | -39360.175 | 30363.835 | -5.189 | 81.322008  |
|          |                  |           |           |        |         |        |            |           | 倍面積    | 384.836556 |
|          |                  |           |           |        |         |        |            |           | 面積     | 192.41     |

\* \* 面積計算 (倍横距法) \* \*

| 地<br>器械点 | 番 : 17-16<br>視準点 | 内角        | 方向角       | 距離     | 緯距      | 經距      | X座標        | Y座標       | 倍横距    | 倍面積        |
|----------|------------------|-----------|-----------|--------|---------|---------|------------|-----------|--------|------------|
| 17-61    | 17-29            | 90-09-05  | 71-09-01  | 3.801  | 1.228   | 3.597   | -39374.265 | 30373.546 | 3.597  | 4.417116   |
| 17-29    | 17-30            | 179-32-41 | 70-41-42  | 4.728  | 1.563   | 4.462   | -39372.702 | 30378.008 | 11.656 | 18.218328  |
| 17-30    | 17-31            | 134-05-12 | 24-46-54  | 5.000  | 4.540   | 2.096   | -39368.162 | 30380.104 | 18.214 | 82.691560  |
| 17-31    | 17-62            | 134-24-16 | 339-11-10 | 12.951 | 12.106  | -4.602  | -39356.056 | 30375.502 | 15.708 | 190.161048 |
| 17-62    | 17-105           | 91-22-22  | 250-33-32 | 11.579 | -3.854  | -10.919 | -39359.910 | 30364.583 | 0.187  | -0.720698  |
| 17-105   | 17-61            | 90-26-24  | 160-59-56 | 16.481 | -15.583 | 5.366   | -39375.493 | 30369.949 | -5.366 | 83.618378  |
|          |                  |           |           |        |         |         |            |           | 倍面積    | 378.385732 |
|          |                  |           |           |        |         |         |            |           | 面積     | 189.19     |

<< 四街道南土地区画整理事業 >>

\* \* 面積計算 (倍横距法) \* \*

| 地<br>器械点 | 番 : 17-17<br>視準点 | 内角        | 方向角       | 距離     | 緯距      | 経距     | X座標        | Y座標       | 倍横距    | 倍面積        |
|----------|------------------|-----------|-----------|--------|---------|--------|------------|-----------|--------|------------|
| 17-60    | 17-26            | 90-02-30  | 73-07-23  | 1.082  | 0.314   | 1.035  | -39378.760 | 30359.840 | 1.035  | 0.324990   |
| 17-26    | 17-27            | 179-29-48 | 72-37-11  | 4.811  | 1.437   | 4.591  | -39377.323 | 30364.431 | 6.661  | 9.571857   |
| 17-27    | 17-28            | 179-08-29 | 71-45-40  | 4.805  | 1.504   | 4.564  | -39375.819 | 30368.995 | 15.816 | 23.787264  |
| 17-28    | 17-61            | 179-22-21 | 71-08-01  | 1.008  | 0.326   | 0.954  | -39375.493 | 30369.949 | 21.334 | 6.954884   |
| 17-61    | 17-105           | 89-51-55  | 340-59-56 | 16.481 | 15.583  | -5.366 | -39359.910 | 30364.583 | 16.922 | 263.695526 |
| 17-105   | 17-104           | 89-29-35  | 250-29-31 | 0.794  | -0.265  | -0.748 | -39360.175 | 30363.835 | 10.808 | -2.864120  |
| 17-104   | 17-103           | 181-57-44 | 252-27-15 | 10.313 | -3.109  | -9.833 | -39363.284 | 30354.002 | 0.227  | -0.705743  |
| 17-103   | 17-60            | 90-37-38  | 163-04-53 | 16.504 | -15.790 | 4.803  | -39379.074 | 30358.805 | -4.803 | 75.839370  |
|          |                  |           |           |        |         |        |            |           | 倍面積    | 376.604028 |
|          |                  |           |           |        |         |        |            |           | 面積     | 188.30     |

\* \* 面積計算 (倍横距法) \* \*

| 地<br>器械点 | 番 : 17-18<br>視準点 | 内角        | 方向角       | 距離     | 緯距      | 経距     | X座標        | Y座標       | 倍横距    | 倍面積        |
|----------|------------------|-----------|-----------|--------|---------|--------|------------|-----------|--------|------------|
| 17-59    | 17-24            | 89-52-28  | 74-32-36  | 3.092  | 0.824   | 2.980  | -39381.501 | 30350.626 | 2.980  | 2.455520   |
| 17-24    | 17-25            | 179-12-30 | 73-45-06  | 4.807  | 1.345   | 4.615  | -39380.156 | 30355.241 | 10.575 | 14.223375  |
| 17-25    | 17-60            | 179-21-38 | 73-06-44  | 3.725  | 1.082   | 3.564  | -39379.074 | 30358.805 | 18.754 | 20.291828  |
| 17-60    | 17-103           | 89-58-09  | 343-04-53 | 16.504 | 15.790  | -4.803 | -39363.284 | 30354.002 | 17.515 | 276.561850 |
| 17-103   | 17-102           | 89-21-59  | 252-26-52 | 1.621  | -0.489  | -1.546 | -39363.773 | 30352.456 | 11.166 | -5.460174  |
| 17-102   | 17-101           | 181-40-10 | 254-07-02 | 9.544  | -2.612  | -9.180 | -39366.385 | 30343.276 | 0.440  | -1.149280  |
| 17-101   | 17-59            | 90-33-06  | 164-40-08 | 16.528 | -15.940 | 4.370  | -39382.325 | 30347.646 | -4.370 | 69.657800  |
|          |                  |           |           |        |         |        |            |           | 倍面積    | 376.580919 |
|          |                  |           |           |        |         |        |            |           | 面積     | 188.29     |

<< 四街道南土地区画整理事業 >>

\* \* 面積計算 (倍横距法) \* \*

| 地<br>器械点 | 番 : 17-19<br>視準点 | 内角        | 方向角       | 距離     | 緯距      | 経距     | X座標        | Y座標       | 倍横距    | 倍面積        |
|----------|------------------|-----------|-----------|--------|---------|--------|------------|-----------|--------|------------|
| 17-58    | 17-21            | 90-19-19  | 76-31-14  | 0.275  | 0.064   | 0.267  | -39385.207 | 30336.693 | 0.267  | 0.017088   |
| 17-21    | 17-22            | 179-13-45 | 75-44-59  | 4.802  | 1.182   | 4.654  | -39384.025 | 30341.347 | 5.188  | 6.132216   |
| 17-22    | 17-23            | 179-16-42 | 75-01-41  | 4.811  | 1.243   | 4.648  | -39382.782 | 30345.995 | 14.490 | 18.011070  |
| 17-23    | 17-59            | 179-29-59 | 74-31-40  | 1.713  | 0.457   | 1.651  | -39382.325 | 30347.646 | 20.789 | 9.500573   |
| 17-59    | 17-101           | 90-08-28  | 344-40-08 | 16.528 | 15.940  | -4.370 | -39366.385 | 30343.276 | 18.070 | 288.035800 |
| 17-101   | 17-100           | 89-26-18  | 254-06-26 | 2.388  | -0.654  | -2.297 | -39367.039 | 30340.979 | 11.403 | -7.457562  |
| 17-100   | 17-99            | 181-47-52 | 255-54-18 | 8.771  | -2.136  | -8.507 | -39369.175 | 30332.472 | 0.599  | -1.279464  |
| 17-99    | 17-58            | 90-17-37  | 166-11-55 | 16.575 | -16.096 | 3.954  | -39385.271 | 30336.426 | -3.954 | 63.643584  |
|          |                  |           |           |        |         |        |            |           | 倍面積    | 376.603305 |
|          |                  |           |           |        |         |        |            |           | 面積     | 188.30     |

\* \* 面積計算 (倍横距法) \* \*

| 地<br>器械点 | 番 : 17-20<br>視準点 | 内角        | 方向角       | 距離     | 緯距      | 経距     | X座標        | Y座標       | 倍横距    | 倍面積        |
|----------|------------------|-----------|-----------|--------|---------|--------|------------|-----------|--------|------------|
| 17-57    | 17-19            | 89-55-34  | 77-45-28  | 2.254  | 0.478   | 2.203  | -39387.398 | 30327.324 | 2.203  | 1.053034   |
| 17-19    | 17-20            | 179-17-32 | 77-03-00  | 4.810  | 1.078   | 4.688  | -39386.320 | 30332.012 | 9.094  | 9.803332   |
| 17-20    | 17-58            | 179-34-53 | 76-37-53  | 4.537  | 1.049   | 4.414  | -39385.271 | 30336.426 | 18.196 | 19.087604  |
| 17-58    | 17-99            | 89-34-02  | 346-11-55 | 16.575 | 16.096  | -3.954 | -39369.175 | 30332.472 | 18.656 | 300.286976 |
| 17-99    | 17-98            | 89-41-41  | 255-53-36 | 3.155  | -0.769  | -3.060 | -39369.944 | 30329.412 | 11.642 | -8.952698  |
| 17-98    | 17-97            | 181-39-29 | 257-33-05 | 7.974  | -1.719  | -7.787 | -39371.663 | 30321.625 | 0.795  | -1.366605  |
| 17-97    | 17-57            | 90-16-49  | 167-49-54 | 16.586 | -16.213 | 3.496  | -39387.876 | 30325.121 | -3.496 | 56.680648  |
|          |                  |           |           |        |         |        |            |           | 倍面積    | 376.592291 |
|          |                  |           |           |        |         |        |            |           | 面積     | 188.29     |



<< 四街道南土地区画整理事業 >>

\* \* 面積計算 (倍横距法) \* \*

| 地<br>器械点 | 番 : 17-21<br>視準点 | 内角        | 方向角       | 距離     | 緯距      | 経距     | X座標        | Y座標       | 倍横距    | 倍面積        |
|----------|------------------|-----------|-----------|--------|---------|--------|------------|-----------|--------|------------|
| 17-56    | 17-17            | 89-48-48  | 78-58-47  | 4.190  | 0.801   | 4.113  | -39389.377 | 30317.917 | 4.113  | 3.294513   |
| 17-17    | 17-18            | 179-29-52 | 78-28-39  | 4.811  | 0.961   | 4.714  | -39388.416 | 30322.631 | 12.940 | 12.435340  |
| 17-18    | 17-57            | 179-17-11 | 77-45-50  | 2.548  | 0.540   | 2.490  | -39387.876 | 30325.121 | 20.144 | 10.877760  |
| 17-57    | 17-97            | 90-04-04  | 347-49-54 | 16.586 | 16.213  | -3.496 | -39371.663 | 30321.625 | 19.138 | 310.284394 |
| 17-97    | 17-96            | 89-42-32  | 257-32-26 | 3.949  | -0.852  | -3.856 | -39372.515 | 30317.769 | 11.786 | -10.041672 |
| 17-96    | 17-95            | 181-38-30 | 259-10-56 | 7.214  | -1.354  | -7.086 | -39373.869 | 30310.683 | 0.844  | -1.142776  |
| 17-95    | 17-56            | 89-59-03  | 169-09-59 | 16.605 | -16.309 | 3.121  | -39390.178 | 30313.804 | -3.121 | 50.900389  |
|          |                  |           |           |        |         |        |            |           | 倍面積    | 376.607948 |
|          |                  |           |           |        |         |        |            |           | 面積     | 188.30     |

\* \* 面積計算 (倍横距法) \* \*

| 地<br>器械点 | 番 : 17-22<br>視準点 | 内角        | 方向角       | 距離     | 緯距      | 経距     | X座標        | Y座標       | 倍横距    | 倍面積        |
|----------|------------------|-----------|-----------|--------|---------|--------|------------|-----------|--------|------------|
| 17-55    | 17-14            | 90-15-55  | 81-05-52  | 1.144  | 0.177   | 1.130  | -39391.989 | 30303.533 | 1.130  | 0.200010   |
| 17-14    | 17-15            | 179-23-56 | 80-29-48  | 4.809  | 0.794   | 4.743  | -39391.195 | 30308.276 | 7.003  | 5.560382   |
| 17-15    | 17-16            | 179-10-42 | 79-40-30  | 4.804  | 0.861   | 4.726  | -39390.334 | 30313.002 | 16.472 | 14.182392  |
| 17-16    | 17-56            | 179-19-03 | 78-59-33  | 0.817  | 0.156   | 0.802  | -39390.178 | 30313.804 | 22.000 | 3.432000   |
| 17-56    | 17-95            | 90-10-26  | 349-09-59 | 16.605 | 16.309  | -3.121 | -39373.869 | 30310.683 | 19.681 | 320.977429 |
| 17-95    | 17-94            | 90-01-19  | 259-11-18 | 4.713  | -0.884  | -4.629 | -39374.753 | 30306.054 | 11.931 | -10.547004 |
| 17-94    | 17-93            | 181-24-36 | 260-35-54 | 6.379  | -1.042  | -6.293 | -39375.795 | 30299.761 | 1.009  | -1.051378  |
| 17-93    | 17-55            | 90-14-03  | 170-49-57 | 16.583 | -16.371 | 2.642  | -39392.166 | 30302.403 | -2.642 | 43.252182  |
|          |                  |           |           |        |         |        |            |           | 倍面積    | 376.006013 |
|          |                  |           |           |        |         |        |            |           | 面積     | 188.00     |

<< 四街道南土地区画整理事業 >>

\* \* 面積計算 (倍横距法) \* \*

| 地<br>器械点 | 番 : 17-23<br>視準点 | 内角        | 方向角       | 距離     | 緯距      | 経距     | X座標        | Y座標       | 倍横距    | 倍面積        |
|----------|------------------|-----------|-----------|--------|---------|--------|------------|-----------|--------|------------|
| 17-54    | 17-13            | 90-02-44  | 81-01-08  | 9.570  | 1.494   | 9.453  | -39392.453 | 30300.566 | 9.453  | 14.122782  |
| 17-13    | 17-55            | 180-06-05 | 81-07-13  | 1.859  | 0.287   | 1.837  | -39392.166 | 30302.403 | 20.743 | 5.953241   |
| 17-55    | 17-93            | 89-42-44  | 350-49-57 | 16.583 | 16.371  | -2.642 | -39375.795 | 30299.761 | 19.938 | 326.404998 |
| 17-93    | 17-92            | 89-45-37  | 260-35-34 | 1.713  | -0.280  | -1.690 | -39376.075 | 30298.071 | 15.606 | -4.369680  |
| 17-92    | 17-90            | 180-22-52 | 260-58-26 | 9.676  | -1.518  | -9.556 | -39377.593 | 30288.515 | 4.360  | -6.618480  |
| 17-90    | 17-54            | 89-59-58  | 170-58-24 | 16.559 | -16.354 | 2.598  | -39393.947 | 30291.113 | -2.598 | 42.487692  |
|          |                  |           |           |        |         |        |            |           | 倍面積    | 377.980553 |
|          |                  |           |           |        |         |        |            |           | 面積     | 188.99     |

\* \* 面積計算 (倍横距法) \* \*

| 地<br>器械点 | 番 : 17-24<br>視準点 | 内角       | 方向角       | 距離     | 緯距      | 経距      | X座標        | Y座標       | 倍横距    | 倍面積        |
|----------|------------------|----------|-----------|--------|---------|---------|------------|-----------|--------|------------|
| 17-53    | 17-54            | 90-02-48 | 81-01-19  | 11.380 | 1.776   | 11.241  | -39393.947 | 30291.113 | 11.241 | 19.964016  |
| 17-54    | 17-90            | 89-57-05 | 350-58-24 | 16.559 | 16.354  | -2.598  | -39377.593 | 30288.515 | 19.884 | 325.182936 |
| 17-90    | 17-88            | 90-00-08 | 260-58-32 | 11.380 | -1.785  | -11.239 | -39379.378 | 30277.276 | 6.047  | -10.793895 |
| 17-88    | 17-53            | 89-59-59 | 170-58-31 | 16.550 | -16.345 | 2.596   | -39395.723 | 30279.872 | -2.596 | 42.431620  |
|          |                  |          |           |        |         |         |            |           | 倍面積    | 376.784677 |
|          |                  |          |           |        |         |         |            |           | 面積     | 188.39     |

<< 四街道南土地区画整理事業 >>

\* \* 面積計算 (倍横距法) \* \*

| 地<br>器械点 | 番 : 17-25<br>視準点 | 内角       | 方向角       | 距離     | 緯距      | 経距      | X座標        | Y座標       | 倍横距    | 倍面積        |
|----------|------------------|----------|-----------|--------|---------|---------|------------|-----------|--------|------------|
| 17-86    | 17-52            | 89-59-52 | 170-58-26 | 16.541 | -16.336 | 2.595   | -39397.500 | 30268.625 | 2.595  | -42.391920 |
| 17-52    | 17-53            | 90-02-52 | 81-01-18  | 11.387 | 1.777   | 11.247  | -39395.723 | 30279.872 | 16.437 | 29.208549  |
| 17-53    | 17-88            | 89-57-13 | 350-58-31 | 16.550 | 16.345  | -2.596  | -39379.378 | 30277.276 | 25.088 | 410.063360 |
| 17-88    | 17-86            | 90-00-03 | 260-58-34 | 11.387 | -1.786  | -11.246 | -39381.164 | 30266.030 | 11.246 | -20.085356 |
|          |                  |          |           |        |         |         |            |           | 倍面積    | 376.794633 |
|          |                  |          |           |        |         |         |            |           | 面積     | 188.39     |

\* \* 面積計算 (倍横距法) \* \*

| 地<br>器械点 | 番 : 17-26-1<br>視準点 | 内角       | 方向角       | 距離     | 緯距      | 経距     | X座標        | Y座標       | 倍横距    | 倍面積        |
|----------|--------------------|----------|-----------|--------|---------|--------|------------|-----------|--------|------------|
| 17-139   | 17-52              | 90-02-52 | 81-01-08  | 5.970  | 0.932   | 5.897  | -39397.500 | 30268.625 | 5.897  | 5.496004   |
| 17-52    | 17-86              | 89-57-18 | 350-58-26 | 16.541 | 16.336  | -2.595 | -39381.164 | 30266.030 | 9.199  | 150.274864 |
| 17-86    | 17-138             | 89-59-51 | 260-58-17 | 5.971  | -0.937  | -5.897 | -39382.101 | 30260.133 | 0.707  | -0.662459  |
| 17-138   | 17-139             | 89-59-59 | 170-58-16 | 16.536 | -16.331 | 2.595  | -39398.432 | 30262.728 | -2.595 | 42.378945  |
|          |                    |          |           |        |         |        |            |           | 倍面積    | 197.487354 |
|          |                    |          |           |        |         |        |            |           | 面積     | 98.74      |

<< 四街道南土地区画整理事業 >>

\* \* 面積計算 (倍横距法) \* \*

| 地<br>器械点 | 番 :<br>視準点 | 17-26-2<br>内角 | 方向角       | 距離     | 緯距      | 経距     | X座標        | Y座標       | 倍横距    | 倍面積        |
|----------|------------|---------------|-----------|--------|---------|--------|------------|-----------|--------|------------|
| 17-138   | 17-84      | 90-00-11      | 260-58-27 | 5.418  | -0.850  | -5.351 | -39382.951 | 30254.782 | -5.351 | 4.548350   |
| 17-84    | 17-51      | 89-59-52      | 170-58-19 | 16.531 | -16.326 | 2.594  | -39399.277 | 30257.376 | -8.108 | 132.371208 |
| 17-51    | 17-139     | 90-03-22      | 81-01-41  | 5.418  | 0.845   | 5.352  | -39398.432 | 30262.728 | -0.162 | -0.136890  |
| 17-139   | 17-138     | 89-56-35      | 350-58-16 | 16.536 | 16.331  | -2.595 | -39382.101 | 30260.133 | 2.595  | 42.378945  |
|          |            |               |           |        |         |        |            |           | 倍面積    | 179.161613 |
|          |            |               |           |        |         |        |            |           | 面積     | 89.58      |

\* \* 面積計算 (倍横距法) \* \*

| 地<br>器械点 | 番 :<br>視準点 | 17-27<br>内角 | 方向角       | 距離     | 緯距      | 経距      | X座標        | Y座標       | 倍横距    | 倍面積        |
|----------|------------|-------------|-----------|--------|---------|---------|------------|-----------|--------|------------|
| 17-50    | 17-12      | 90-44-59    | 81-43-27  | 0.445  | 0.064   | 0.440   | -39400.986 | 30246.560 | 0.440  | 0.028160   |
| 17-12    | 17-51      | 179-17-49   | 81-01-16  | 10.950 | 1.709   | 10.816  | -39399.277 | 30257.376 | 11.696 | 19.988464  |
| 17-51    | 17-84      | 89-57-03    | 350-58-19 | 16.531 | 16.326  | -2.594  | -39382.951 | 30254.782 | 19.918 | 325.181268 |
| 17-84    | 17-82      | 90-00-17    | 260-58-36 | 11.394 | -1.787  | -11.253 | -39384.738 | 30243.529 | 6.071  | -10.848877 |
| 17-82    | 17-50      | 89-59-52    | 170-58-28 | 16.516 | -16.312 | 2.591   | -39401.050 | 30246.120 | -2.591 | 42.264392  |
|          |            |             |           |        |         |         |            |           | 倍面積    | 376.613407 |
|          |            |             |           |        |         |         |            |           | 面積     | 188.30     |

<< 四街道南土地区画整理事業 >>

\* \* 面積計算 (倍横距法) \* \*

| 地<br>器械点 | 番 :<br>視準点 | 17-28-1<br>内角 | 方向角       | 距離     | 緯距      | 経距     | X座標        | Y座標       | 倍横距    | 倍面積       |
|----------|------------|---------------|-----------|--------|---------|--------|------------|-----------|--------|-----------|
| 17-140   | 17-11      | 91-33-20      | 82-31-49  | 2.700  | 0.351   | 2.677  | -39401.072 | 30245.965 | 2.677  | 0.939627  |
| 17-11    | 17-50      | 179-23-29     | 81-55-18  | 0.157  | 0.022   | 0.155  | -39401.050 | 30246.120 | 5.509  | 0.121198  |
| 17-50    | 17-82      | 89-03-10      | 350-58-28 | 16.516 | 16.312  | -2.591 | -39384.738 | 30243.529 | 3.073  | 50.126776 |
| 17-82    | 17-141     | 89-59-55      | 260-58-23 | 2.855  | -0.448  | -2.820 | -39385.186 | 30240.709 | -2.338 | 1.047424  |
| 17-141   | 17-140     | 90-00-06      | 170-58-29 | 16.441 | -16.237 | 2.579  | -39401.423 | 30243.288 | -2.579 | 41.875223 |
|          |            |               |           |        |         |        |            |           | 倍面積    | 94.110248 |
|          |            |               |           |        |         |        |            |           | 面積     | 47.05     |

\* \* 面積計算 (倍横距法) \* \*

| 地<br>器械点 | 番 :<br>視準点 | 17-28-2<br>内角 | 方向角       | 距離     | 緯距      | 経距     | X座標        | Y座標       | 倍横距     | 倍面積        |
|----------|------------|---------------|-----------|--------|---------|--------|------------|-----------|---------|------------|
| 17-141   | 17-80      | 89-59-54      | 260-58-23 | 8.738  | -1.371  | -8.630 | -39386.557 | 30232.079 | -8.630  | 11.831730  |
| 17-80    | 17-49      | 90-00-16      | 170-58-39 | 15.916 | -15.719 | 2.496  | -39402.276 | 30234.575 | -14.764 | 232.075316 |
| 17-49    | 17-10      | 94-33-59      | 85-32-38  | 5.444  | 0.423   | 5.428  | -39401.853 | 30240.003 | -6.840  | -2.893320  |
| 17-10    | 17-140     | 176-59-55     | 82-32-33  | 3.313  | 0.430   | 3.285  | -39401.423 | 30243.288 | 1.873   | 0.805390   |
| 17-140   | 17-141     | 88-25-56      | 350-58-29 | 16.441 | 16.237  | -2.579 | -39385.186 | 30240.709 | 2.579   | 41.875223  |
|          |            |               |           |        |         |        |            |           | 倍面積     | 283.694339 |
|          |            |               |           |        |         |        |            |           | 面積      | 141.84     |

<< 四街道南土地区画整理事業 >>

\* \* 面積計算 ( 倍横距法 ) \* \*

| 地<br>器械点 | 番 :<br>視準点 | 17-29<br>内角 | 方向角       | 距離     | 緯距      | 経距      | X座標        | Y座標       | 倍横距    | 倍面積        |
|----------|------------|-------------|-----------|--------|---------|---------|------------|-----------|--------|------------|
| 17-48    | 17-8       | 100-50-26   | 91-48-47  | 5.974  | -0.189  | 5.971   | -39402.486 | 30228.009 | 5.971  | -1.128519  |
| 17-8     | 17-9       | 176-36-13   | 88-25-00  | 6.007  | 0.166   | 6.005   | -39402.320 | 30234.014 | 17.947 | 2.979202   |
| 17-9     | 17-49      | 177-05-55   | 85-30-55  | 0.563  | 0.044   | 0.561   | -39402.276 | 30234.575 | 24.513 | 1.078572   |
| 17-49    | 17-80      | 85-27-44    | 350-58-39 | 15.916 | 15.719  | -2.496  | -39386.557 | 30232.079 | 22.578 | 354.903582 |
| 17-80    | 17-78      | 89-59-51    | 260-58-30 | 12.386 | -1.943  | -12.233 | -39388.500 | 30219.846 | 7.849  | -15.250607 |
| 17-78    | 17-48      | 89-59-51    | 170-58-21 | 13.970 | -13.797 | 2.192   | -39402.297 | 30222.038 | -2.192 | 30.243024  |
|          |            |             |           |        |         |         |            |           | 倍面積    | 372.825254 |
|          |            |             |           |        |         |         |            |           | 面積     | 186.41     |

\* \* 面積計算 ( 倍横距法 ) \* \*

| 地<br>器械点 | 番 :<br>視準点 | 17-30<br>内角 | 方向角       | 距離     | 緯距     | 経距      | X座標        | Y座標       | 倍横距     | 倍面積        |
|----------|------------|-------------|-----------|--------|--------|---------|------------|-----------|---------|------------|
| 17-78    | 17-47      | 90-00-04    | 260-58-25 | 16.381 | -2.570 | -16.178 | -39391.070 | 30203.668 | -16.178 | 41.577460  |
| 17-47    | 17-3       | 90-03-33    | 171-01-58 | 6.185  | -6.109 | 0.964   | -39397.179 | 30204.632 | -31.392 | 191.773728 |
| 17-3     | 17-4       | 144-04-50   | 135-06-48 | 5.003  | -3.545 | 3.531   | -39400.724 | 30208.163 | -26.897 | 95.349865  |
| 17-4     | 17-5       | 143-35-07   | 98-41-55  | 1.924  | -0.291 | 1.902   | -39401.015 | 30210.065 | -21.464 | 6.246024   |
| 17-5     | 17-6       | 179-01-48   | 97-43-43  | 6.016  | -0.809 | 5.961   | -39401.824 | 30216.026 | -13.601 | 11.003209  |
| 17-6     | 17-7       | 176-46-53   | 94-30-36  | 6.003  | -0.472 | 5.984   | -39402.296 | 30222.010 | -1.656  | 0.781632   |
| 17-7     | 17-48      | 177-32-07   | 92-02-43  | 0.028  | -0.001 | 0.028   | -39402.297 | 30222.038 | 4.356   | -0.004356  |
| 17-48    | 17-78      | 78-55-38    | 350-58-21 | 13.970 | 13.797 | -2.192  | -39388.500 | 30219.846 | 2.192   | 30.243024  |
|          |            |             |           |        |        |         |            |           | 倍面積     | 376.970586 |
|          |            |             |           |        |        |         |            |           | 面積      | 188.48     |