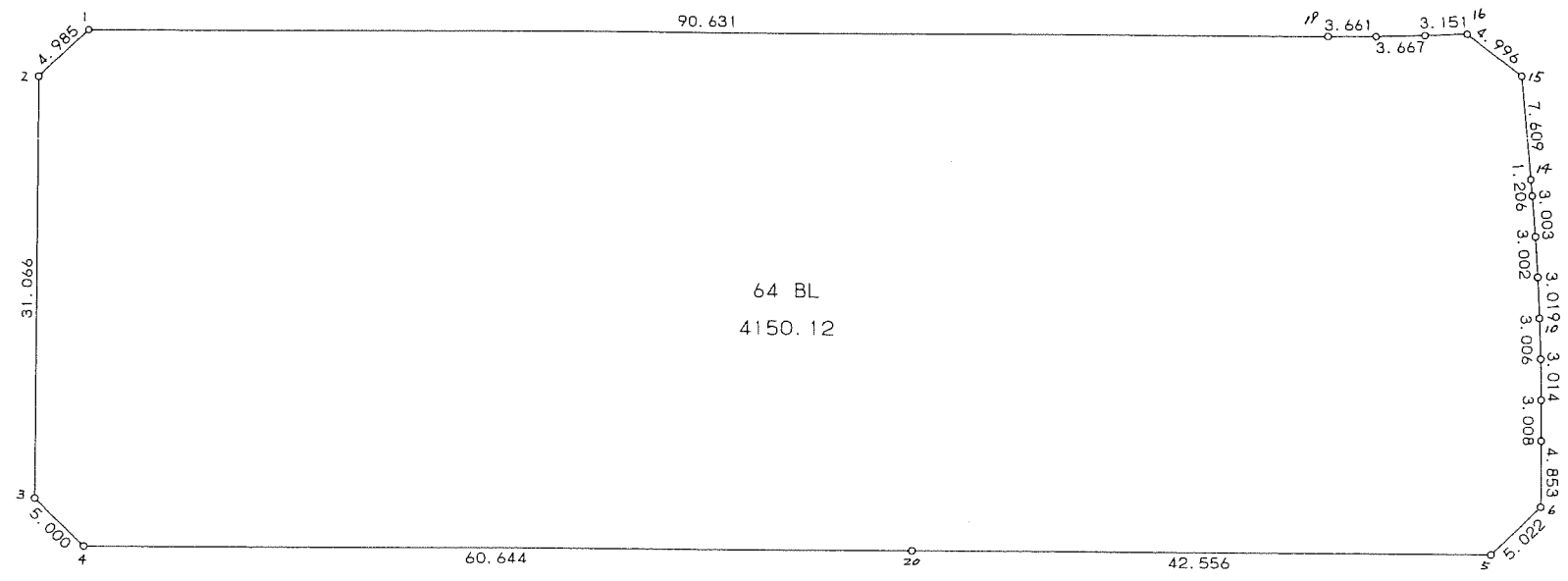
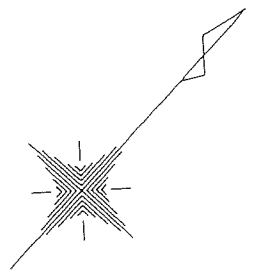


64街区



* * 面積計算 (倍横距法) * *

地 器械点	番 : 視準点	64 BL 内角	方向角	距離	緯距	経距	X座標	Y座標	倍横距	倍面積
64-1	64-2	136-15-34	184-38-53	4.985	-4.969	-0.404	-38847.265	30840.668	-0.404	2.007476
64-2	64-3	133-45-04	138-23-57	31.066	-23.231	20.626	-38870.496	30861.294	19.818	-460.391958
64-3	64-4	134-31-28	92-55-25	5.000	-0.255	4.993	-38870.751	30866.287	45.437	-11.586435
64-4	64-20	135-27-24	48-22-49	60.644	40.279	45.336	-38830.472	30911.623	95.766	3857.358714
64-20	64-5	180-00-32	48-23-21	42.556	28.260	31.818	-38802.212	30943.441	172.920	4886.719200
64-5	64-6	134-52-32	3-15-53	5.022	5.014	0.286	-38797.198	30943.727	205.024	1027.990336
64-6	64-7	134-57-03	318-12-56	4.853	3.619	-3.234	-38793.579	30940.493	202.076	731.313044
64-7	64-8	179-40-06	317-53-02	3.008	2.231	-2.017	-38791.348	30938.476	196.825	439.116575
64-8	64-9	179-31-22	317-24-24	3.014	2.219	-2.040	-38789.129	30936.436	192.768	427.752192
64-9	64-10	178-53-14	316-17-38	3.006	2.173	-2.077	-38786.956	30934.359	188.651	409.938623
64-10	64-11	179-21-49	315-39-27	3.019	2.159	-2.110	-38784.797	30932.249	184.464	398.257776
64-11	64-12	179-14-04	314-53-31	3.002	2.119	-2.127	-38782.678	30930.122	180.227	381.901013
64-12	64-13	178-40-41	313-34-12	3.003	2.070	-2.176	-38780.608	30927.946	175.924	364.162680
64-13	64-14	179-22-52	312-57-04	1.206	0.822	-0.883	-38779.786	30927.063	172.865	142.095030
64-14	64-15	179-55-07	312-52-11	7.609	5.177	-5.577	-38774.609	30921.486	166.405	861.478685
64-15	64-16	132-58-31	265-50-42	4.996	-0.362	-4.983	-38774.971	30916.503	155.845	-56.415890
64-16	64-17	140-14-53	226-05-35	3.151	-2.185	-2.270	-38777.156	30914.233	148.592	-324.673520
64-17	64-18	180-42-30	226-48-05	3.667	-2.510	-2.673	-38779.666	30911.560	143.649	-360.558990
64-18	64-19	181-19-15	228-07-20	3.661	-2.444	-2.726	-38782.110	30908.834	138.250	-337.883000
64-19	64-1	180-15-59	228-23-19	90.631	-60.186	-67.762	-38842.296	30841.072	67.762	-4078.323732
									倍面積	8300.257819
									面積	4150.12