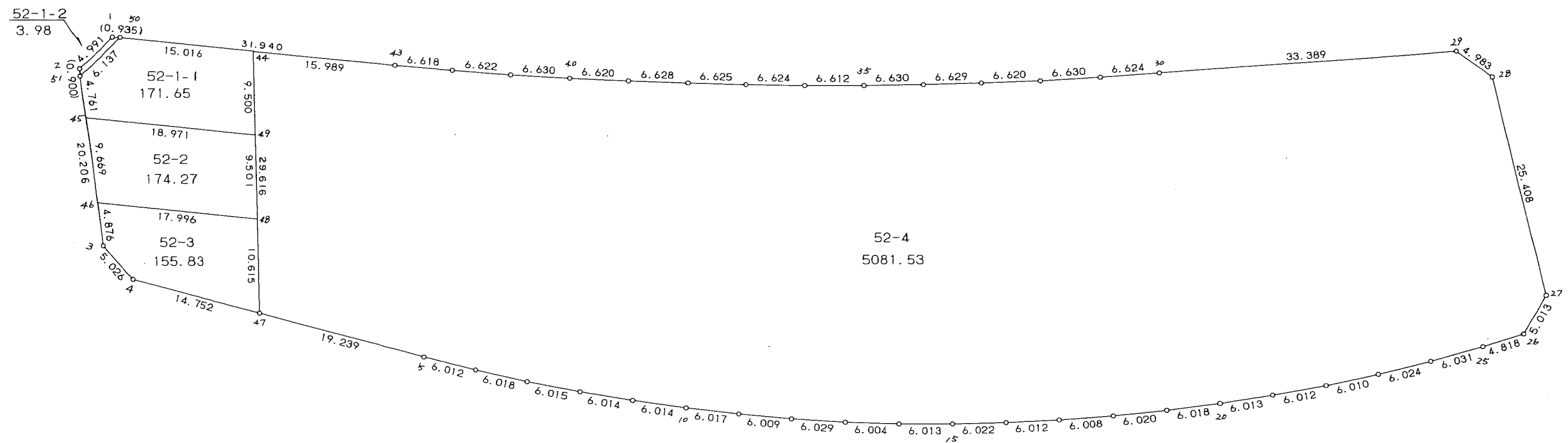
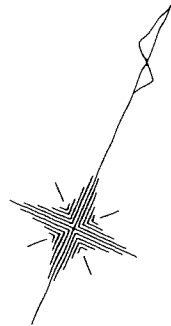


52街区



<< 四街道南土地区画整理事業 >>

* * 面積計算 (倍横距法) * *

地 器械点	番 視準点	52 BL 内角	方向角	距離	緯距	経距	X座標	Y座標	倍横距	倍面積
52-1	52-2	128-29-14	200-18-56	4.991	-4.681	-1.733	-39174.836	30219.781	-1.733	8.112173
52-2	52-3	128-41-40	149-00-36	20.206	-17.322	10.404	-39192.158	30230.185	6.938	-120.180036
52-3	52-4	146-08-33	115-09-09	5.026	-2.136	4.549	-39194.294	30234.734	21.891	-46.759176
52-4	52-47	145-46-17	80-55-26	14.752	2.327	14.567	-39191.967	30249.301	41.007	95.423289
52-47	52-5	180-08-40	81-04-06	19.239	2.987	19.006	-39188.980	30268.307	74.580	222.770460
52-5	52-6	179-07-29	80-11-35	6.012	1.024	5.924	-39187.956	30274.231	99.510	101.898240
52-6	52-7	178-42-49	78-54-24	6.018	1.158	5.906	-39186.798	30280.137	111.340	128.931720
52-7	52-8	178-16-46	77-11-10	6.015	1.334	5.865	-39185.464	30286.002	123.111	164.230074
52-8	52-9	178-34-36	75-45-46	6.014	1.479	5.829	-39183.985	30291.831	134.805	199.376595
52-9	52-10	178-28-54	74-14-40	6.014	1.633	5.788	-39182.352	30297.619	146.422	239.107126
52-10	52-11	178-19-03	72-33-43	6.017	1.803	5.740	-39180.549	30303.359	157.950	284.783850
52-11	52-12	178-27-05	71-00-48	6.009	1.955	5.682	-39178.594	30309.041	169.372	331.122260
52-12	52-13	178-35-31	69-36-19	6.029	2.101	5.651	-39176.493	30314.692	180.705	379.661205
52-13	52-14	178-26-21	68-02-40	6.004	2.245	5.569	-39174.248	30320.261	191.925	430.871625
52-14	52-15	178-16-36	66-19-16	6.013	2.415	5.507	-39171.833	30325.768	203.001	490.247415
52-15	52-16	178-25-29	64-44-45	6.022	2.569	5.446	-39169.264	30331.214	213.954	549.647826
52-16	52-17	178-30-52	63-15-37	6.012	2.705	5.369	-39166.559	30336.583	224.769	608.000145
52-17	52-18	178-26-34	61-42-11	6.008	2.848	5.290	-39163.711	30341.873	235.428	670.498944
52-18	52-19	178-31-30	60-13-41	6.020	2.989	5.225	-39160.722	30347.098	245.943	735.123627
52-19	52-20	178-25-58	58-39-39	6.018	3.130	5.140	-39157.592	30352.238	256.308	802.244040
52-20	52-21	178-23-11	57-02-50	6.013	3.271	5.046	-39154.321	30357.284	266.494	871.701874
52-21	52-22	178-26-08	55-28-58	6.012	3.407	4.954	-39150.914	30362.238	276.494	942.015058
52-22	52-23	178-27-55	53-56-53	6.010	3.537	4.859	-39147.377	30367.097	286.307	1012.667859
52-23	52-24	178-30-17	52-27-10	6.024	3.671	4.776	-39143.706	30371.873	295.942	1086.403082
52-24	52-25	178-24-30	50-51-40	6.031	3.807	4.678	-39139.899	30376.551	305.396	1162.642572

<< 四街道南土地区画整理事業 >>

器械点	視準点	内角	方向角	距離	緯距	経距	X座標	Y座標	倍横距	倍面積
52-25	52-26	178-25-55	49-17-35	4.818	3.142	3.652	-39136.757	30380.203	313.726	985.727092
52-26	52-27	136-33-27	5-51-02	5.013	4.987	0.511	-39131.770	30380.714	317.889	1585.312443
52-27	52-28	136-37-13	322-28-15	25.408	20.150	-15.478	-39111.620	30365.236	302.922	6103.878300
52-28	52-29	139-41-38	282-09-53	4.983	1.050	-4.871	-39110.570	30360.365	282.573	296.701650
52-29	52-30	139-47-29	241-57-22	33.389	-15.698	-29.469	-39126.268	30330.896	248.233	-3896.761634
52-30	52-31	180-04-14	242-01-36	6.624	-3.107	-5.850	-39129.375	30325.046	212.914	-661.523798
52-31	52-32	180-42-04	242-43-40	6.630	-3.038	-5.893	-39132.413	30319.153	201.171	-611.157498
52-32	52-33	181-20-17	244-03-57	6.620	-2.895	-5.953	-39135.308	30313.200	189.325	-548.095875
52-33	52-34	180-39-09	244-43-06	6.629	-2.831	-5.994	-39138.139	30307.206	177.378	-502.157118
52-34	52-35	180-39-40	245-22-46	6.630	-2.762	-6.027	-39140.901	30301.179	165.357	-456.716034
52-35	52-36	180-41-29	246-04-15	6.612	-2.682	-6.044	-39143.583	30295.135	153.286	-411.113052
52-36	52-37	180-42-57	246-47-12	6.624	-2.611	-6.088	-39146.194	30289.047	141.154	-368.553094
52-37	52-38	180-44-38	247-31-50	6.625	-2.532	-6.122	-39148.726	30282.925	128.944	-326.486208
52-38	52-39	180-47-07	248-18-57	6.628	-2.449	-6.159	-39151.175	30276.766	116.663	-285.707687
52-39	52-40	180-43-59	249-02-56	6.620	-2.367	-6.182	-39153.542	30270.584	104.322	-246.930174
52-40	52-41	180-41-55	249-44-51	6.630	-2.295	-6.220	-39155.837	30264.364	91.920	-210.956400
52-41	52-42	180-52-35	250-37-26	6.622	-2.197	-6.247	-39158.034	30258.117	79.453	-174.558241
52-42	52-43	180-19-41	250-57-07	6.618	-2.160	-6.256	-39160.194	30251.861	66.950	-144.612000
52-43	52-1	180-52-35	251-49-42	31.940	-9.961	-30.347	-39170.155	30221.514	30.347	-302.286467
									倍面積	11174.546052
									面積	5587.27

<< 四街道南土地区画整理事業 >>

地番	種別	面積	坪数
52-1-1	境界点	171.6500000	51.92
52-1-2	境界点	3.9800000	1.20
52-2	境界点	174.2700000	52.71
52-3	境界点	155.8300000	47.13
52-4	境界点	5081.5300000	1537.16
	合計	5587.2600000	1690.14

<< 四街道南土地区画整理事業 >>

* * 面積計算 (倍横距法) * *

地 器械点	番 : 視準点	52-1-1 内角	方向角	距離	緯距	経距	X座標	Y座標	倍横距	倍面積
52-50	52-51	128-45-35	200-35-16	6.137	-5.745	-2.158	-39175.608	30220.244	-2.158	12.397710
52-51	52-45	128-24-48	149-00-04	4.761	-4.081	2.452	-39179.689	30222.696	-1.864	7.606984
52-45	52-49	102-49-32	71-49-36	18.971	5.917	18.025	-39173.772	30240.721	18.613	110.133121
52-49	52-44	82-55-29	334-45-05	9.500	8.592	-4.052	-39165.180	30236.669	32.586	279.978912
52-44	52-50	97-04-36	251-49-41	15.016	-4.683	-14.267	-39169.863	30222.402	14.267	-66.812361
									倍面積	343.304366
									面積	171.65

* * 面積計算 (倍横距法) * *

地 器械点	番 : 視準点	52-1-2 内角	方向角	距離	緯距	経距	X座標	Y座標	倍横距	倍面積
52-1	52-2	128-31-04	200-18-56	4.991	-4.681	-1.733	-39174.836	30219.781	-1.733	8.112173
52-2	52-51	128-43-54	149-02-50	0.900	-0.772	0.463	-39175.608	30220.244	-3.003	2.318316
52-51	52-50	51-32-26	20-35-16	6.137	5.745	2.158	-39169.863	30222.402	-0.382	-2.194590
52-50	52-1	51-12-36	251-47-52	0.935	-0.292	-0.888	-39170.155	30221.514	0.888	-0.259296
									倍面積	7.976603
									面積	3.98

<< 四街道南土地区画整理事業 >>

* * 面積計算 (倍横距法) * *

地 器械点	番 視準点	52-2 内角	方向角	距離	緯距	経距	X座標	Y座標	倍横距	倍面積
52-45	52-46	77-11-10	149-00-46	9.669	-8.289	4.978	-39187.978	30227.674	4.978	-41.262642
52-46	52-48	102-49-01	71-49-47	17.996	5.612	17.099	-39182.366	30244.773	27.055	151.832660
52-48	52-49	82-55-36	334-45-23	9.501	8.594	-4.052	-39173.772	30240.721	40.102	344.636588
52-49	52-45	97-04-13	251-49-36	18.971	-5.917	-18.025	-39179.689	30222.696	18.025	-106.653925
									倍面積	348.552681
									面積	174.27

* * 面積計算 (倍横距法) * *

地 器械点	番 視準点	52-3 内角	方向角	距離	緯距	経距	X座標	Y座標	倍横距	倍面積
52-46	52-3	77-10-35	149-00-22	4.876	-4.180	2.511	-39192.158	30230.185	2.511	-10.495980
52-3	52-4	146-08-47	115-09-09	5.026	-2.136	4.549	-39194.294	30234.734	9.571	-20.443656
52-4	52-47	145-46-17	80-55-26	14.752	2.327	14.567	-39191.967	30249.301	28.687	66.754649
52-47	52-48	73-49-36	334-45-02	10.615	9.601	-4.528	-39182.366	30244.773	38.726	371.808326
52-48	52-46	97-04-45	251-49-47	17.996	-5.612	-17.099	-39187.978	30227.674	17.099	-95.959588
									倍面積	311.663751
									面積	155.83

<< 四街道南土地区画整理事業 >>

* * 面積計算 (倍横距法) * *

地 器械点	番 : 52-4 視準点	内角	方向角	距離	緯距	経距	X座標	Y座標	倍横距	倍面積
52-47	52-5	106-18-56	81-04-06	19.239	2.987	19.006	-39188.980	30268.307	19.006	56.770922
52-5	52-6	179-07-29	80-11-35	6.012	1.024	5.924	-39187.956	30274.231	43.936	44.990464
52-6	52-7	178-42-49	78-54-24	6.018	1.158	5.906	-39186.798	30280.137	55.766	64.577028
52-7	52-8	178-16-46	77-11-10	6.015	1.334	5.865	-39185.464	30286.002	67.537	90.094358
52-8	52-9	178-34-36	75-45-46	6.014	1.479	5.829	-39183.985	30291.831	79.231	117.182649
52-9	52-10	178-28-54	74-14-40	6.014	1.633	5.788	-39182.352	30297.619	90.848	148.354784
52-10	52-11	178-19-03	72-33-43	6.017	1.803	5.740	-39180.549	30303.359	102.376	184.583928
52-11	52-12	178-27-05	71-00-48	6.009	1.955	5.682	-39178.594	30309.041	113.798	222.475090
52-12	52-13	178-35-31	69-36-19	6.029	2.101	5.651	-39176.493	30314.692	125.131	262.900231
52-13	52-14	178-26-21	68-02-40	6.004	2.245	5.569	-39174.248	30320.261	136.351	306.107995
52-14	52-15	178-16-36	66-19-16	6.013	2.415	5.507	-39171.833	30325.768	147.427	356.036205
52-15	52-16	178-25-29	64-44-45	6.022	2.569	5.446	-39169.264	30331.214	158.380	406.878220
52-16	52-17	178-30-52	63-15-37	6.012	2.705	5.369	-39166.559	30336.583	169.195	457.672475
52-17	52-18	178-26-34	61-42-11	6.008	2.848	5.290	-39163.711	30341.873	179.854	512.224192
52-18	52-19	178-31-30	60-13-41	6.020	2.989	5.225	-39160.722	30347.098	190.369	569.012941
52-19	52-20	178-25-58	58-39-39	6.018	3.130	5.140	-39157.592	30352.238	200.734	628.297420
52-20	52-21	178-23-11	57-02-50	6.013	3.271	5.046	-39154.321	30357.284	210.920	689.919320
52-21	52-22	178-26-08	55-28-58	6.012	3.407	4.954	-39150.914	30362.238	220.920	752.674440
52-22	52-23	178-27-55	53-56-53	6.010	3.537	4.859	-39147.377	30367.097	230.733	816.102621
52-23	52-24	178-30-17	52-27-10	6.024	3.671	4.776	-39143.706	30371.873	240.368	882.390928
52-24	52-25	178-24-30	50-51-40	6.031	3.807	4.678	-39139.899	30376.551	249.822	951.072354
52-25	52-26	178-25-55	49-17-35	4.818	3.142	3.652	-39136.757	30380.203	258.152	811.113584
52-26	52-27	136-33-27	5-51-02	5.013	4.987	0.511	-39131.770	30380.714	262.315	1308.164905
52-27	52-28	136-37-13	322-28-15	25.408	20.150	-15.478	-39111.620	30365.236	247.348	4984.062200
52-28	52-29	139-41-38	282-09-53	4.983	1.050	-4.871	-39110.570	30360.365	226.999	238.348950

<< 四街道南土地区画整理事業 >>

器械点	視準点	内角	方向角	距離	緯距	経距	X座標	Y座標	倍横距	倍面積
52-29	52-30	139-47-29	241-57-22	33.389	-15.698	-29.469	-39126.268	30330.896	192.659	-3024.360982
52-30	52-31	180-04-14	242-01-36	6.624	-3.107	-5.850	-39129.375	30325.046	157.340	-488.855380
52-31	52-32	180-42-04	242-43-40	6.630	-3.038	-5.893	-39132.413	30319.153	145.597	-442.323686
52-32	52-33	181-20-17	244-03-57	6.620	-2.895	-5.953	-39135.308	30313.200	133.751	-387.209145
52-33	52-34	180-39-09	244-43-06	6.629	-2.831	-5.994	-39138.139	30307.206	121.804	-344.827124
52-34	52-35	180-39-40	245-22-46	6.630	-2.762	-6.027	-39140.901	30301.179	109.783	-303.220646
52-35	52-36	180-41-29	246-04-15	6.612	-2.682	-6.044	-39143.583	30295.135	97.712	-262.063584
52-36	52-37	180-42-57	246-47-12	6.624	-2.611	-6.088	-39146.194	30289.047	85.580	-223.449380
52-37	52-38	180-44-38	247-31-50	6.625	-2.532	-6.122	-39148.726	30282.925	73.370	-185.772840
52-38	52-39	180-47-07	248-18-57	6.628	-2.449	-6.159	-39151.175	30276.766	61.089	-149.606961
52-39	52-40	180-43-59	249-02-56	6.620	-2.367	-6.182	-39153.542	30270.584	48.748	-115.386516
52-40	52-41	180-41-55	249-44-51	6.630	-2.295	-6.220	-39155.837	30264.364	36.346	-83.414070
52-41	52-42	180-52-35	250-37-26	6.622	-2.197	-6.247	-39158.034	30258.117	23.879	-52.462163
52-42	52-43	180-19-41	250-57-07	6.618	-2.160	-6.256	-39160.194	30251.861	11.376	-24.572160
52-43	52-44	180-52-42	251-49-49	15.989	-4.986	-15.192	-39165.180	30236.669	-10.072	50.218992
52-44	52-47	82-55-21	154-45-10	29.616	-26.787	12.632	-39191.967	30249.301	-12.632	338.373384
									倍面積	10163.075943
									面積	5081.53