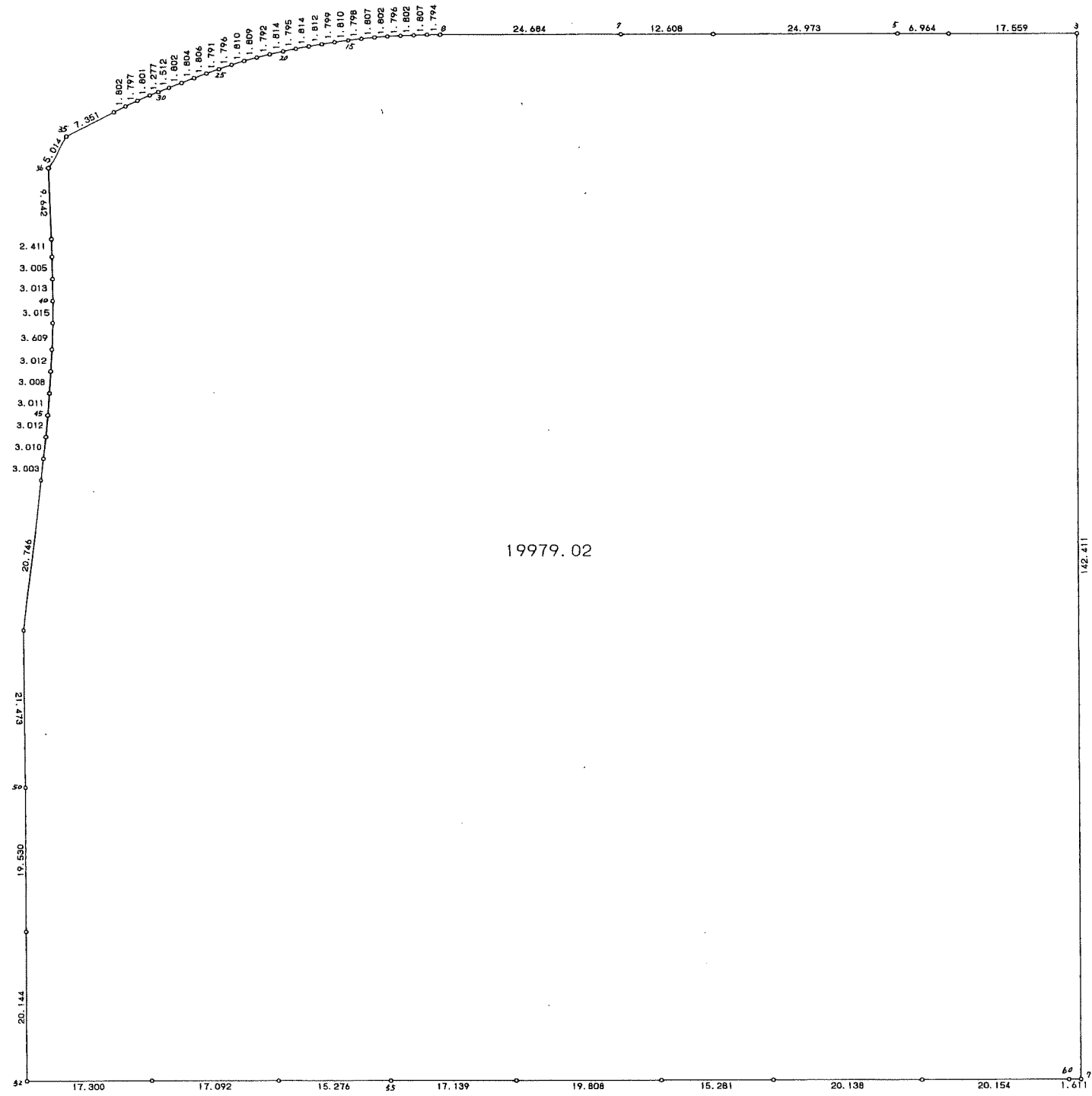
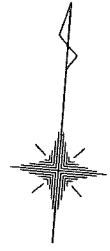


93 街区



<< 四街道南土地区画整理事業 >>

\* \* 面積計算 (倍横距法) \* \*

地 器械点	番 : 視準点	93 BL 内角	方向角	距離	緯距	経距	X座標	Y座標	倍横距	倍面積
93-3	93-4	90-04-37	265-40-31	17.559	-1.324	-17.509	-38376.916	31059.525	-17.509	23.181916
93-4	93-5	179-49-18	265-29-49	6.964	-0.547	-6.943	-38377.463	31052.582	-41.961	22.952667
93-5	93-6	180-03-25	265-33-14	24.973	-1.936	-24.898	-38379.399	31027.684	-73.802	142.880672
93-6	93-7	180-00-53	265-34-07	12.608	-0.974	-12.570	-38380.373	31015.114	-111.270	108.376980
93-7	93-8	180-02-01	265-36-08	24.684	-1.893	-24.611	-38382.266	30990.503	-148.451	281.017743
93-8	93-9	179-12-27	264-48-35	1.794	-0.162	-1.787	-38382.428	30988.716	-174.849	28.325538
93-9	93-10	178-56-19	263-44-54	1.807	-0.197	-1.796	-38382.625	30986.920	-178.432	35.151104
93-10	93-11	179-38-50	263-23-44	1.802	-0.207	-1.789	-38382.832	30985.131	-182.017	37.677519
93-11	93-12	179-25-19	262-49-03	1.796	-0.225	-1.782	-38383.057	30983.349	-185.588	41.757300
93-12	93-13	178-22-35	261-11-38	1.802	-0.276	-1.781	-38383.333	30981.568	-189.151	52.205676
93-13	93-14	178-48-31	260-00-09	1.807	-0.313	-1.780	-38383.646	30979.788	-192.712	60.318856
93-14	93-15	178-52-49	258-52-58	1.798	-0.347	-1.765	-38383.993	30978.023	-196.257	68.101179
93-15	93-16	178-39-00	257-31-58	1.810	-0.391	-1.767	-38384.384	30976.256	-199.789	78.117499
93-16	93-17	179-21-33	256-53-31	1.799	-0.408	-1.753	-38384.792	30974.503	-203.309	82.950072
93-17	93-18	179-14-10	256-07-41	1.812	-0.434	-1.759	-38385.226	30972.744	-206.821	89.760314
93-18	93-19	179-17-23	255-25-04	1.814	-0.457	-1.756	-38385.683	30970.988	-210.336	96.123552
93-19	93-20	178-31-06	253-56-10	1.795	-0.497	-1.725	-38386.180	30969.263	-213.817	106.267049
93-20	93-21	178-52-54	252-49-04	1.814	-0.536	-1.733	-38386.716	30967.530	-217.275	116.459400
93-21	93-22	178-55-21	251-44-25	1.792	-0.561	-1.702	-38387.277	30965.828	-220.710	123.818310
93-22	93-23	178-54-33	250-38-58	1.809	-0.600	-1.707	-38387.877	30964.121	-224.119	134.471400
93-23	93-24	178-15-11	248-54-09	1.810	-0.651	-1.689	-38388.528	30962.432	-227.515	148.112265
93-24	93-25	178-15-37	247-09-46	1.796	-0.697	-1.655	-38389.225	30960.777	-230.859	160.908723
93-25	93-26	178-58-27	246-08-13	1.791	-0.725	-1.638	-38389.950	30959.139	-234.152	169.760200
93-26	93-27	178-58-08	245-06-21	1.806	-0.760	-1.639	-38390.710	30957.500	-237.429	180.446040
93-27	93-28	179-23-55	244-30-16	1.804	-0.777	-1.628	-38391.487	30955.872	-240.696	187.020792

<< 四街道南土地区画整理事業 >>

器械点	視準点	内角	方向角	距離	緯距	経距	X座標	Y座標	倍横距	倍面積
93-28	93-29	179-47-30	244-17-46	1.802	-0.782	-1.624	-38392.269	30954.248	-243.948	190.767336
93-29	93-30	179-17-43	243-35-29	1.512	-0.672	-1.354	-38392.941	30952.894	-246.926	165.934272
93-30	93-31	180-00-43	243-36-12	1.277	-0.568	-1.144	-38393.509	30951.750	-249.424	141.672832
93-31	93-32	178-32-23	242-08-35	1.801	-0.842	-1.593	-38394.351	30950.157	-252.161	212.319562
93-32	93-33	178-01-24	240-09-59	1.797	-0.894	-1.559	-38395.245	30948.598	-255.313	228.249822
93-33	93-34	179-10-09	239-20-08	1.802	-0.919	-1.550	-38396.164	30947.048	-258.422	237.489818
93-34	93-35	179-43-16	239-03-24	7.351	-3.780	-6.305	-38399.944	30940.743	-266.277	1006.527060
93-35	93-36	147-44-00	206-47-24	5.014	-4.476	-2.260	-38404.420	30938.483	-274.842	1230.192792
93-36	93-37	146-55-14	173-42-38	9.642	-9.584	1.056	-38414.004	30939.539	-276.046	2645.624864
93-37	93-38	180-16-56	173-59-34	2.411	-2.397	0.253	-38416.401	30939.792	-274.737	658.544589
93-38	93-39	180-23-08	174-22-42	3.005	-2.991	0.294	-38419.392	30940.086	-274.190	820.102290
93-39	93-40	180-34-28	174-57-10	3.013	-3.001	0.265	-38422.393	30940.351	-273.631	821.166631
93-40	93-41	180-52-34	175-49-44	3.015	-3.007	0.219	-38425.400	30940.570	-273.147	821.353029
93-41	93-42	181-43-18	177-33-02	3.609	-3.606	0.155	-38429.006	30940.725	-272.773	983.619438
93-42	93-43	181-01-25	178-34-27	3.012	-3.011	0.075	-38432.017	30940.800	-272.543	820.626973
93-43	93-44	180-07-49	178-42-16	3.008	-3.007	0.068	-38435.024	30940.868	-272.400	819.106800
93-44	93-45	180-44-22	179-26-38	3.011	-3.010	0.029	-38438.034	30940.897	-272.303	819.632030
93-45	93-46	180-46-43	180-13-21	3.012	-3.012	-0.012	-38441.046	30940.885	-272.286	820.125432
93-46	93-47	181-26-51	181-40-12	3.010	-3.008	-0.088	-38444.054	30940.797	-272.386	819.337088
93-47	93-48	180-42-54	182-23-06	3.003	-3.000	-0.124	-38447.054	30940.673	-272.598	817.794000
93-48	93-49	180-14-03	182-37-09	20.746	-20.724	-0.948	-38467.778	30939.725	-273.670	5671.537080
93-49	93-50	172-29-36	175-06-45	21.473	-21.395	1.829	-38489.173	30941.554	-272.789	5836.320655
93-50	93-51	180-30-57	175-37-42	19.530	-19.473	1.489	-38508.646	30943.043	-269.471	5247.408783
93-51	93-52	179-56-30	175-34-12	20.144	-20.083	1.556	-38528.729	30944.599	-266.426	5350.633358
93-52	93-53	89-54-45	85-28-57	17.300	1.362	17.246	-38527.367	30961.845	-247.624	-337.263888
93-53	93-54	180-03-39	85-32-36	17.092	1.328	17.040	-38526.039	30978.885	-213.338	-283.312864

<< 四街道南土地区画整理事業 >>

器械点	視準点	内角	方向角	距離	緯距	経距	X座標	Y座標	倍横距	倍面積
93-54	93-55	180-04-21	85-36-57	15.276	1.168	15.230	-38524.871	30994.115	-181.068	-211.487424
93-55	93-56	179-59-30	85-36-27	17.139	1.313	17.089	-38523.558	31011.204	-148.749	-195.307437
93-56	93-57	179-53-56	85-30-23	19.808	1.552	19.748	-38522.006	31030.952	-111.912	-173.687424
93-57	93-58	180-04-41	85-35-04	15.281	1.176	15.235	-38520.830	31046.187	-76.929	-90.468504
93-58	93-59	179-58-12	85-33-16	20.138	1.561	20.078	-38519.269	31066.265	-41.616	-64.962576
93-59	93-60	180-00-33	85-33-49	20.154	1.559	20.093	-38517.710	31086.358	-1.445	-2.252755
93-60	93-71	179-54-55	85-28-44	1.611	0.127	1.606	-38517.583	31087.964	20.254	2.572258
93-71	93-3	90-07-10	355-35-54	142.411	141.991	-10.930	-38375.592	31077.034	10.930	1551.961630
									倍面積	39958.040316
									面積	19979.02